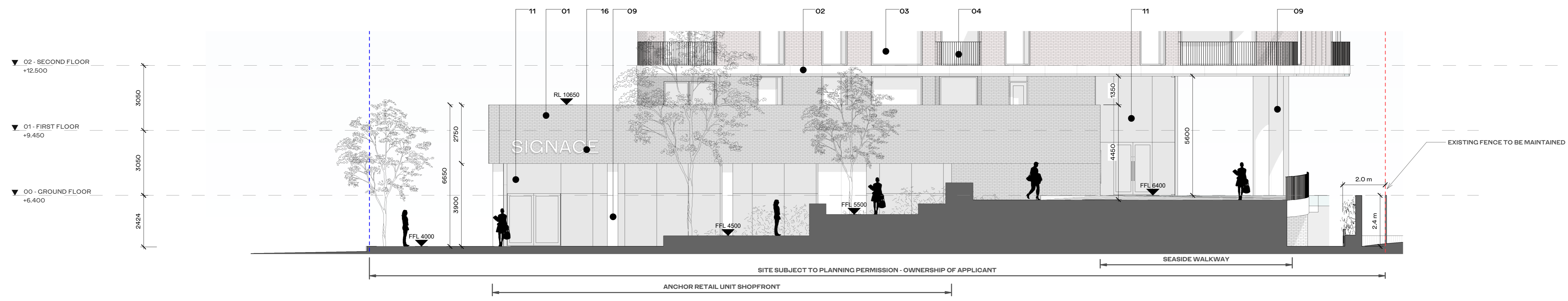
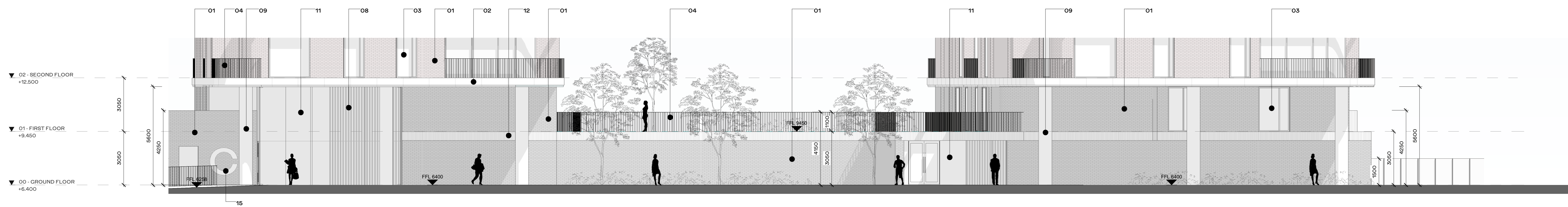


HJL ELEVATION FINISHES LEGEND

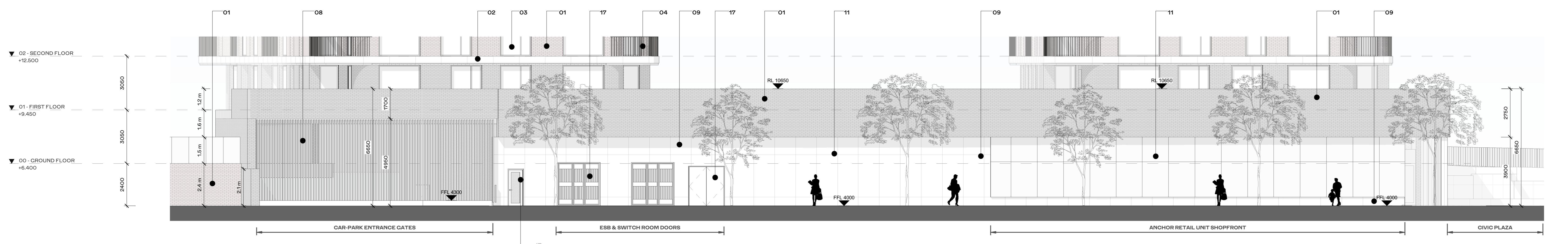
- Key Value Keynote Text
- 01 TEXTURED BRICK FROM SELECTED PALETTE
 - 02 CERAMIC PANELS OR POLISHED RECONSTITUTED STONE PANEL
 - 03 COMPOSITE ALUMINIUM FRAME WINDOW SYSTEM TO SELECT FINISH
 - 04 PPO STEEL BALUSTRADE TO SELECT FINISH
 - 05 PRECAST CONCRETE LINTEL
 - 07 PPO ALUMINIUM PANEL TO SELECT RAL FINISH
 - 08 BAGUETTE STYLE CERAMIC OR POLISHED RECONSTITUTED STONE SCREEN
 - 09 CAST IN SITU FAIR FACED CONCRETE
 - 10 FAIR FACED CONCRETE LOW RISE WALL
 - 11 TOGGLE FIXED GLAZING WITH POWDER COATED VERTICAL MULLIONS TO SELECTED RAL
 - 12 TEXTURED BRICK SOLIDER COURSE FROM SELECTED PALETTE
 - 13 FAIR FACED CONCRETE FLINTH
 - 14 PPO ALUMINIUM COUVEES
 - 15 METAL LETTERING - BUILDING
 - 16 METAL LETTERING - SHOP, RESTAURANT
 - 17 PPO ALUMINIUM DOOR TO SELECT RAL FINISH
 - 18 VERTICAL METAL SCREENS



1 BLOCK C GROUND FLOOR - EAST ELEVATION
 1:100



2 BLOCK C GROUND FLOOR - NORTH ELEVATION
 1:100



3 BLOCK C GROUND FLOOR - SOUTHERN ELEVATION
 1:100

REV	DATE	DESCRIPTION	CHK	DRN
P1	26/11/2019	ISSUED FOR PLANNING APPROVAL	OB	OJ

STATUS CODE DESCRIPTION
ISSUED FOR PLANNING APPROVAL

CLIENT
Atlas GP Limited

PROJECT
Project Claremont

DRAWING
GROUND FLOOR ELEVATIONS BLOCK C

PROJECT NUMBER	DATE	
60520	26/11/19	
SCALE @ A0:	DRAWN/CHECKED:	
As indicated	OJ/ OB	
STATUS CODE	DRAWING NUMBER	REVISION
A1	CLR-HJL-A-2230	P1